

# Agilent GPC/SEC Software Sample GPC Analysis Report



**Agilent Technologies**

## SMA (R)

### Workspace Details

Workspace name Poly lactide  
Location C:\ProgramData\Agilent Technologies\GPC\Workspaces\Poly lactide\  
Comments  
Created by Administrator at 13:44:31 on 15 June 2015

### Sample Properties

Sample name SMA (R)  
File name ICF\_16\_03\_2018-0008.sample  
Collected by GPC at 14:07:30 on 16 March 2018  
Instrument name Instrument 1

### Column Calibration Details

Name GPC\_Calib  
Created by Administrator at 15:53:55 on 18 June 2015  
Last modified by GPC at 09:48:47 on 24 August 2016  
Comments GPC Column Calibration created Thursday, June 18, 2015 by Administrator  
GPC Column Calibration amended Thursday, June 18, 2015 by Administrator  
GPC Column Calibration amended Thursday, June 18, 2015 by Administrator

Calibration Type	Narrow Standard	Curve Fit Used	3
Calibration Curve	$y = -0.0005918x^3 + 0.0308x^2 - 0.8981x + 12.44$		
High Limit MW RT (mins)	10.68333	Low Limit MW RT (mins)	19.65000
High Limit MW (g/mol)	465600	Low Limit MW (g/mol)	162
Flow Rate Marker Name		Flow Marker RT (mins)	0.00000
K (Input) ((10e-5) dL/g)	14.100		
Alpha (Input)	0.700		
Residual Sum Of Squares	0.0060349	Corrected Sum Of Squares	13.8054
Coeff. Of Determination	0.999563	Standard Y Error Estimate	0.0274657
Linear Correlation Coeff	-0.999414		

### Column Calibration Data Points

Point	Peak Max RT (mins)	MW	Log MW	Point in Use?	Percent Error
1	10.68333	465600	5.67	Yes	7.18
2	11.33333	217900	5.34	Yes	-3.41
3	11.93333	113300	5.05	Yes	-11.05
4	12.98333	47190	4.67	Yes	0.18
5	13.51667	29150	4.46	Yes	0.34
6	14.46667	13270	4.12	Yes	5.45
7	15.23333	6940	3.84	Yes	6.73
8	16.20000	2780	3.44	Yes	-2.51
9	17.06667	1390	3.14	Yes	0.98
10	17.56667	860	2.93	Yes	-5.28
11	18.58333	370	2.57	Yes	-4.18
12	19.65000	162	2.21	Yes	3.96

Analyst: .....

Date: .....

Checked By: .....

Date: .....

# Agilent GPC/SEC Software Sample GPC Analysis Report



Agilent Technologies

## Processing Parameters

Method Last modified by Administrator at 13:44:30 on 15 June 2015  
 Using Flow Rate Correction No  
 Mark-Houwink K ((10e-5) dL/g) 14.100  
 Mark-Houwink Alpha 0.700  
 Concentration Detector Used in Analysis RI  
 Injection volume (µL) 100.00  
 Flow rate (mL/min) 1.00

## MW Ranges Method

Calculate MW Ranges No

## Percentage Fractions Method

Calculate Percentage Fractions No

## Results

Analysed by GPC at 15:24:04 on 16 March 2018  
 Comments

## Molecular Weight Averages

Peak	Mp (g/mol)	Mn (g/mol)	Mw (g/mol)	Mz (g/mol)	Mz+1 (g/mol)	Mv (g/mol)	PD
Peak 1	4053	3220	3843	4592	5431	4474	1.193
Peak 2	1497	983	1040	1098	1153	1090	1.058
Peak 3	483	458	469	481	492	479	1.024
Peak 4	260	256	260	265	269	264	1.016
Peak 5	185	182	182	183	183	183	1

## Peak Information

	Start (mins)	End (mins)
Baseline region 1	4.43333	12.46667
Peak 1	14.45000	16.90000
Peak 2	16.96667	17.95000
Peak 3	18.05000	18.73333
Peak 4	18.80000	19.33333
Peak 5	19.36667	19.58333

Analyst: .....

Date: .....

Checked By: .....

Date: .....

# Agilent GPC/SEC Software Sample GPC Analysis Report



**Agilent Technologies**

## Peak Trace Information

Peak	Trace	Peak Max RT (mins)	Peak Area (mV.s)	Peak Height (mV)
Peak 1	RI	15.80000	817.110	10.244
Peak 1	VS DP	15.96667	571.375	6.306
Peak 1	VS IP	15.71667	7.699	0.644
Peak 1	LS 90°	15.53333	564.822	12.851
Peak 1	LS 15°	15.55000	296.690	5.642
Peak 2	RI	16.96667	274.783	5.290
Peak 2	VS DP	17.88333	192.643	3.858
Peak 2	VS IP	17.83333	8.182	-0.596
Peak 2	LS 90°	17.03333	68.802	1.525
Peak 2	LS 15°	17.03333	45.530	1.084
Peak 3	RI	18.33333	176.899	5.258
Peak 3	VS DP	18.46667	117.329	3.345
Peak 3	VS IP	18.66667	3.079	-0.406
Peak 3	LS 90°	18.08333	31.814	0.950
Peak 3	LS 15°	18.50000	22.505	0.757
Peak 4	RI	19.05000	103.247	3.551
Peak 4	VS DP	18.81667	78.107	2.771
Peak 4	VS IP	18.85000	4.961	-0.516
Peak 4	LS 90°	18.88333	17.924	0.668
Peak 4	LS 15°	18.93333	13.997	0.730
Peak 5	RI	19.46667	40.210	3.178
Peak 5	VS DP	19.58333	24.386	2.132
Peak 5	VS IP	19.58333	0.818	-0.362
Peak 5	LS 90°	19.41667	5.835	0.488
Peak 5	LS 15°	19.40000	5.228	0.659

Analyst: .....

Date: .....

Checked By: .....

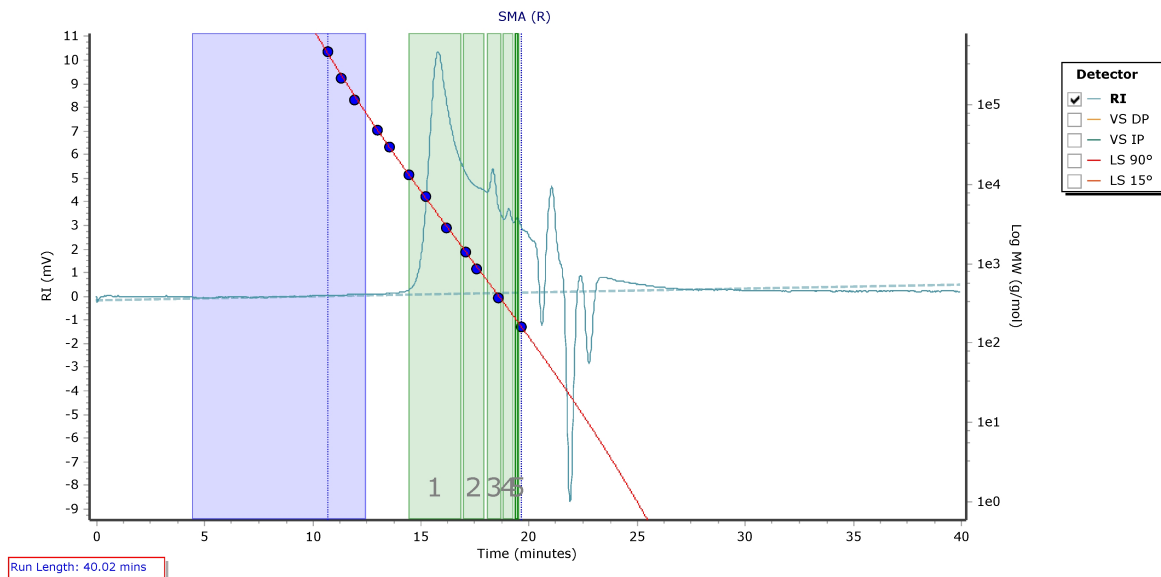
Date: .....

# Agilent GPC/SEC Software Sample GPC Analysis Report



Agilent Technologies

## Chromatogram Plot



Analyst: .....

Date: .....

Checked By: .....

Date: .....

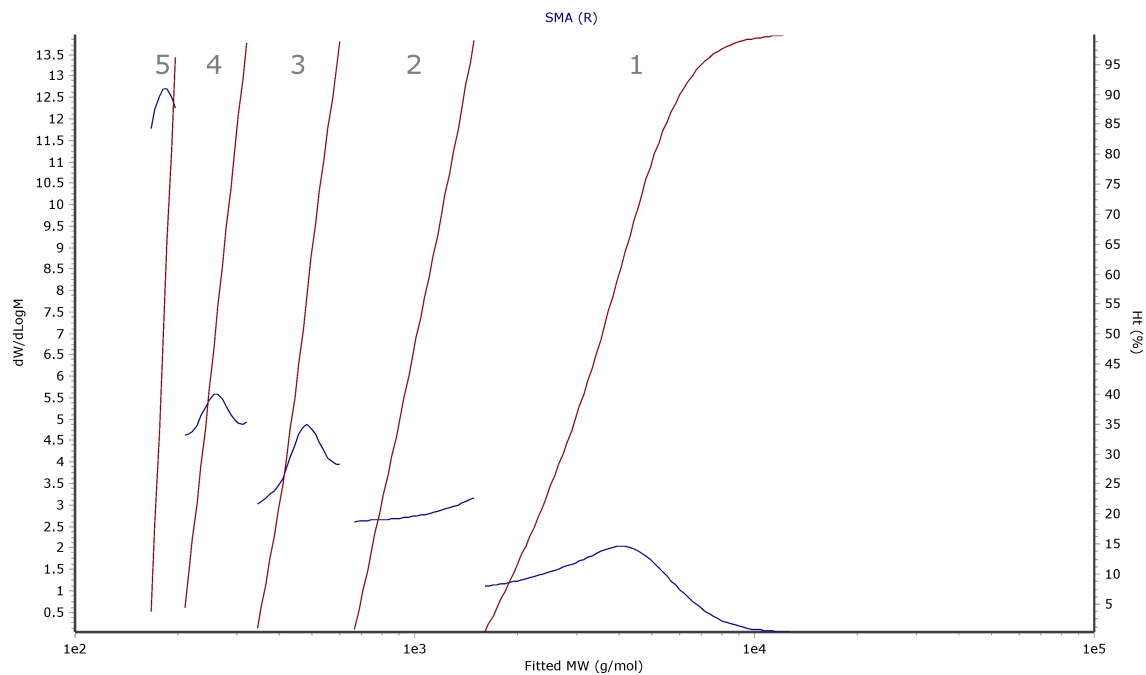


# Agilent GPC/SEC Software Sample GPC Analysis Report



Agilent Technologies

## Distribution Plot



Analyst: .....

Date: .....

Checked By: .....

Date: .....